



Climate Emergency

Developing
your action plan



Australian
Energy
Foundation



We acknowledge the Traditional Owners of country throughout Australia and recognise their continuing connection to land, waters and culture. We pay our respects to their Elders past, present and emerging.

Contents



| | |
|---|---|
| Our Emergency | 4 |
| <hr/> | |
| Declaring a Climate Emergency | 5 |
| <hr/> | |
| Where you are and where you want to be | 6 |
| <hr/> | |
| About Australian Energy Foundation | 7 |
| <hr/> | |

Our Emergency

Heatwaves are our deadliest natural disaster, sadly killing thousands more people than bushfires or floods.

The elderly, children and those with health issues are most vulnerable to the impacts from heat waves. With energy costs continually rising, cooling homes with outdated and inefficient appliances is a cost that households can't afford and some go without and suffer the heat to save money. Unfortunately, this can come at a more extreme cost.

At home, people begin to endure heat-related symptoms including dehydration, cramps, heat exhaustion and heat stroke. Many pre-existing medical conditions are exacerbated in the extreme heat, making it difficult to diagnose exactly how the heat has impacted the death of an individual.

This is a silent and deadly reality of the climate emergency.

The vast majority of Australians understand the seriousness of the climate emergency and the need to take urgent action. However, inexplicably, Australia's climate change policy is ranked as the worst of 57 countries, with a score of 0.

This is why the Australian Energy Foundation (AEF) has joined local governments, businesses and NGOs across Australia and declared a climate emergency,

Background

In 2016, Darebin City Council became the first local government in the world to declare a climate emergency, it was supported unanimously.

By the end of 2019, there was 1,261 jurisdictions in 25 countries that have declared a climate emergency.

Populations covered by jurisdictions that have declared a climate emergency amount to 798 million citizens. In New Zealand 74% of the population live in areas that have declared a climate emergency. In Australia 82 Councils and the Australian Capital Territory have declared, the number is growing daily.

There are 252 Non Government Organisations (Schools, Churches, Universities, Associations and Businesses) declaring a climate emergency. Our declaration takes that number to 253, along with 11,258 scientists.

"Our role in Australia has never been more critical, we are ready to work with you and tackle the climate emergency head on."

Alison Rowe, CEO

Declaring a Climate Emergency



What does it mean to declare a climate emergency?

By declaring a Climate Emergency you acknowledge:

- » The climate emergency situation refers to catastrophic changes to the world's climate caused by human activity and resulting in a loss of a safe climate, which threatens all life on earth.
- » The climate emergency response refers to a specific approach to tackling climate change, which seeks to mobilise and take action at a scale and speed that will restore a safe climate, with the least possible loss and damage during the transition back to a safe climate.
- » To restore a safe climate we need a rapid transition to zero emissions across all sectors, as well as the drawdown of all the excess greenhouse gases in the air.
- » 'Business as usual' and incremental or gradual improvements will not be enough.

- » The technical solutions needed to transition to a zero emissions economy and beyond have been identified by science and research.
- » What is needed now is appropriate political action and rapid implementation of the solutions.

Developing your climate emergency action plan.

Acknowledging that every path will be different, we recommend undertaking continuous steps in developing a Climate Emergency Action Plan (CEAP).

- » Understanding where you are
- » Defining where you want to be
- » Designing the Plan
- » Delivering the Plan
- » Evaluating and updating the Plan



Support for all aspects of your plan

We can help you with all aspects of your plan, from designing and delivering your plan, to an independent review, evaluation or refresh of an existing plan.

Our support will be custom fit to your community and your needs:

Design

- » Scope and Background
- » Establishing Baseline (Activity/GHG)
- » Feasibility Study
- » Risks and Opportunities
- » Options Analysis
- » Targets
- » Methodology and Framework
- » Community Engagement



If you already have a Climate Emergency Action Plan:

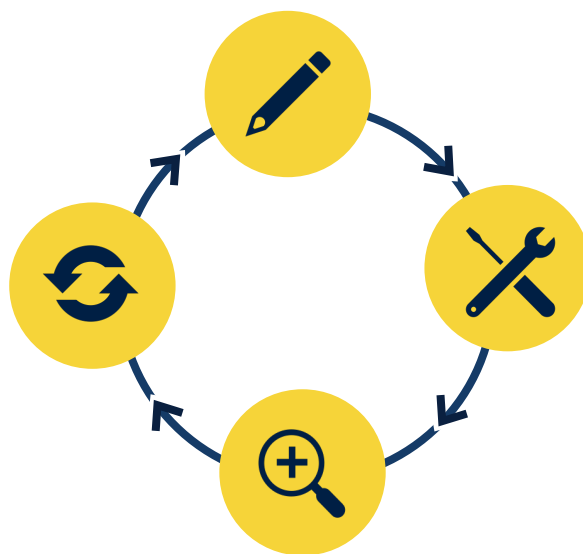


Independent Review

- » Market Comparison
- » Options Analysis
- » AEF Endorsement

Deliver

- » Program Management
- » Pilots and Trials
- » Campaigns
- » Community Engagement
- » Energy Advice Centre
- » Information Sessions
- » Product Referrals - Renewable Energy and Energy Efficiency



Refresh

- » Market Comparison
- » 2020 – 2025 Update

Monitor & Evaluate

- » Tracking of Targets
- » Community Engagement
- » Options Analysis

About Australian Energy Foundation



The Australian Energy Foundation is leading the way to an equitable zero carbon society.

We are a for-purpose organisation whose work benefits all Australians.

Our Role

The Australian Energy Foundation accelerates the energy transition by empowering communities to take action.

Our Work

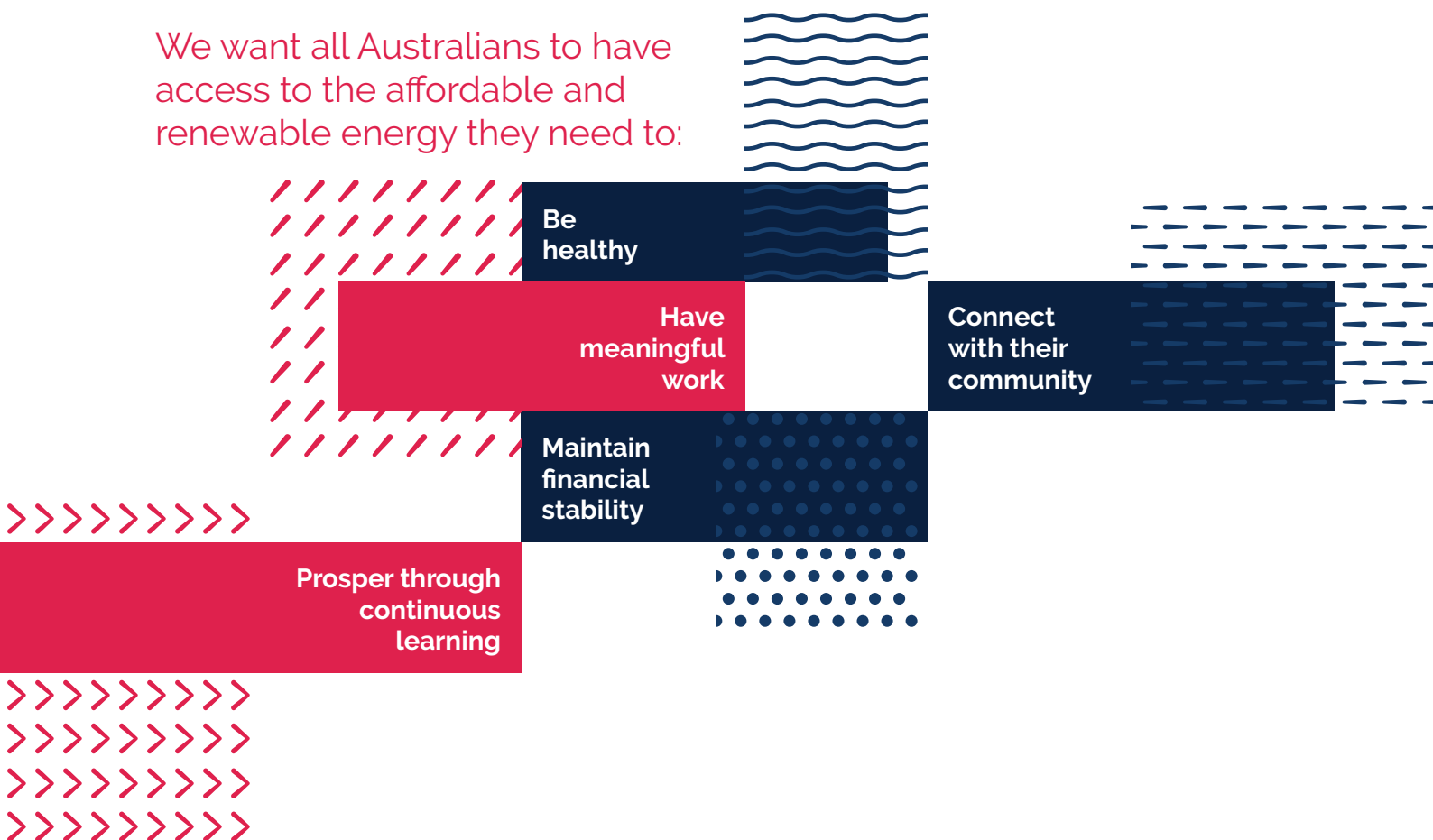
Through our expertise, tenacity and partnerships, we:

Demonstrate the pathways to a zero carbon society.

Influence and inspire to build understanding, investment and action.

Deliver solutions that have a positive impact.

We want all Australians to have access to the affordable and renewable energy they need to:



For support in developing your
climate emergency action plan
contact:

Alison Rowe on
(03) 9385 8507
alison.rowe@aef.com.au

aef.com.au | 03 9385 8585

in   



Australian
Energy
Foundation